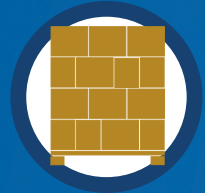




**A-B-C PACKAGING  
MACHINE CORPORATION**



**PALLETIZING**



## Model 700 Robot Palletizer

A-B-C robot palletizers combine the best in robotic technology with efficient and robust designs to give you flexible, reliable, low maintenance systems that will provide years of dependable service.

- Complete palletizing solutions
- Multiple options for product transport
- Designed for maximum flexibility

# Full featured robot palletizer for top production



- Palletize cases, trays, bags, totes with multiple SKUs
- Range of vacuum and mechanical end-of-arm tooling (EOAT) options for gentle and precise handling
- One-touch control for all preset pallet patterns
- Program new configurations at the operator panel
- Robust construction for reliable operation and low maintenance

## Standard system design options:

- 4 or 5-axis robot arms
- 1 to 4 in/out product and pallet configuration
- Multiple EOAT (end-of-arm tooling) options available for product handling, determined per product specifications
- Speeds to 30 cycles per minute
- Color touchscreen HMI with on-screen product programming
- 66 pound capacity with standard EOAT (custom available for added capacity)
- Up to 100" pallet load heights
- Up to 124" horizontal reach
- Full view guard doors with safety interlocks
- Heavy gauge plate steel frame
- Elevated beacon fault light
- Pallet and slipsheet accessories



## Complete palletizing solutions

Standard systems include a high payload robot with vacuum head for single or dual feed, product transport and staging conveyors, high visibility guarding, Allen Bradley PLC controls and programming for your product requirements. This robust package can be enhanced with optional equipment or tooling for specific needs.



## Multiple product/pallet configurations

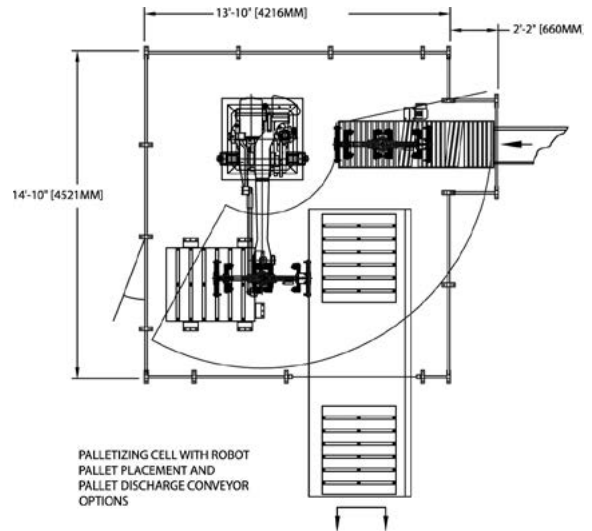
Standard programming includes 1 to 4 in/out product and pallet configurations, allowing palletizing of multiple lines simultaneously. Multiple SKUs may be stacked concurrently with visible label orientation.



## Simplified line integration

With industry-standard Allen Bradley controls, integrated with the unified control package, the robot and all peripheral equipment are controlled within one system. This ensures seamless integration with other equipment, easy operation and programming from the touchscreen panel, and simplified maintenance.

## Sample line configuration



All information in this brochure was current at time of printing, however, in the continuing effort to improve the quality and construction of A-B-C equipment, we reserve the right to make changes without notice.

C-162-12/17



**A-B-C PACKAGING  
MACHINE CORPORATION**



ERECTORS



PACKERS



SEALERS



PARTITIONERS



PALLETIZERS



DEPALLETIZERS



DECASERS